



CITY OF DIAMOND BAR PUBLIC SAFETY COMMITTEE MEETING

Grand Conference Room
21810 Copley Dr., Diamond Bar, CA 91765

April 13, 2026
10:00 AM

1. Call to Order
2. Roll Call
3. Public Comments
4. Discussion Items
 - 4.a Presentation of 2025 Public Safety Annual Report.
5. Committee Member Comments
6. Adjourn

Annual Public Safety Statistics

Overview

This report presents the latest year-over-year statistics and historical analysis of the City's law enforcement, fire protection, and animal care and control programs. Additional information about the services and programs provided by each of the City contract public safety service providers is available online at diamondbarca.gov/publicsafety. This link also provides access to detailed crime statistics and interactive charts via one of the City's Open Data portals at diamondbarca.gov/opendata.

Law Enforcement



The City contracts with the Los Angeles County Sheriff's Department, which allows the City to get a customized policing program and access to the full resources of the Sheriff's Department, including, but not limited to Aero Bureau, narcotics, and the major crimes task force. The City's base contract law personnel cost for Fiscal Year 2024-25 was approximately \$8.2 million.

Fire Protection

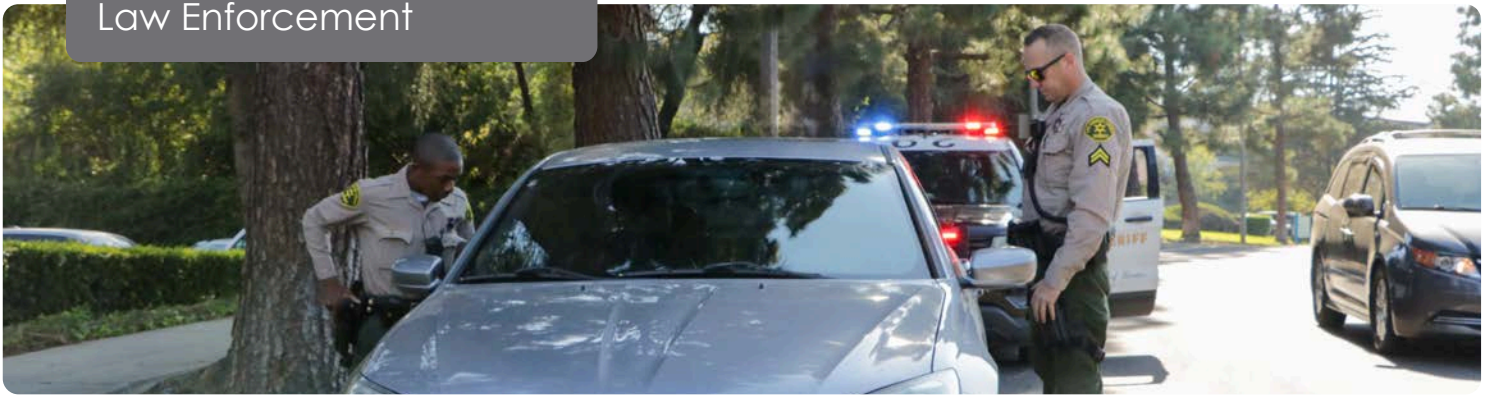


Los Angeles County Fire Department provides Diamond Bar fire protection and emergency medical services through the Consolidated Fire Protection District, which is funded through an annual property tax assessment levied by the County. The City does not directly fund fire protection and EMS services.

Animal Care and Control



The Inland Valley Humane Society & S.P.C.A. (IVHS), a nonprofit headquartered in nearby Pomona, provides animal care and control to Diamond Bar. Its close proximity offers convenient access for pet owners and ensures quick response times for local enforcement and nuisance issues. The Fiscal Year 2024-25 contract totaled approximately \$465,000, partially offset by licensing fees.



Part 1 Crime 2025 vs. 2024

Category	2025	2024	Difference	% Change
Total Part 1 Crime	903	992	-89	-9%
Total Violent Crime	60	38	22	57.9%
Total Property Crime	843	954	-111	-11.6%

Part 1 Violent Crime 2025 vs. 2024

Category	2025	2024	Difference	% Change
Homicide	0	0	0	N/A
Rape	6	5	1	20%
Robbery	21	11	10	90%
Assault	33	22	11	50%

Part 1 Property Crime 2025 vs. 2024

Category	2025	2024	Difference	% Change
Burglary	309	343	-34	-9.9%
Res. Burglary	198	216	-18	-8.3%
Other	111	127	-16	-12.6%
Larceny Theft	478	535	-57	-10.7%
From Vehicle	155	150	5	3.3%
Grand Theft Auto	56	74	-18	-24.3%
Arson	0	2	-2	-100%

Total Calls for Service 2025 vs. 2024

Category	2025	2024	Difference	% Change
Total Calls for Service	9594	9399	195	2%
Emergency	496	500	-4	-0.8%
Priority	1435	1268	167	13.2%
Routine	7663	7631	32	0%

Response Times 2025 vs. 2024

Category	2025	2024	Difference	% Change
Emergency	4.98	4.9	0.08	1.60%
Priority	9.88	9.6	0.28	2.90%
Routine	33.15	29	4.15	14.30%

Total Arrests 2025 vs. 2024

Category	2025	2024	Difference	% Change
Total Arrests	255	331	-76	-23%
Part 1 Crimes	79	70	9	12.90%
Part 2 Crimes	176	261	-85	-32.60%

Part 1 Crime 2025 vs. Historical Average

Category	2025	Historical Avg.	Difference	% Change
Total Part 1 Crime	903	1139.39	-236.39	-20.80%
Total Violent Crime	60	122.67	-62.67	-51.10%
Total Property Crime	843	1016.92	-173.92	-17.10%

Part 1 Violent Crime 2025 vs. Historical Average

Category	2025	Historical Avg.	Difference	% Change
Homicide	0	1.11	-1.11	-100%
Rape	6	5.72	0.28	4.9%
Robbery	21	39.97	-18.97	-47.5%
Assault	33	75.83	-42.83	-56.5%

Part 1 Property Crime 2025 vs. Historical Average

Category	2025	Historical Avg.	Difference	% Change
Burglary	309	304.78	4.22	1.38%
Larceny Theft	478	558.42	-80.42	-14.4%
Grand Theft Auto	56	149.25	-93.25	-62.5%
Arson	0	5.03	-5.03	-100%

Part 1 Crime 2025 vs. 5-Year Average

Category	2025	5-Year Average	Difference	% Change
Total Part 1 Crime	903	1007.5	-104.5	-10.4%
Total Violent Crime	60	64.8	-4.8	-7.4%
Total Property Crime	843	919.2	-76.2	-8.3%

Part 1 Violent Crime 2025 vs. 5-Year Average

Category	2025	5-Year Average	Difference	% Change
Homicide	0	0.8	-0.8	-100%
Rape	6	8	-2	-25%
Robbery	21	18.4	2.6	14.10%
Assault	33	37.4	-4.4	-11.80%

Part 1 Property Crime 2025 vs. 5-Year Average

Category	2025	5-Year Average	Difference	% Change
Burglary	309	256.4	52.6	20.5%
Larceny Theft	478	572.8	-94.8	-16.6%
Grand Theft Auto	56	87.8	-31.8	-36.2%
Arson	0	2.2	-2.2	-100%

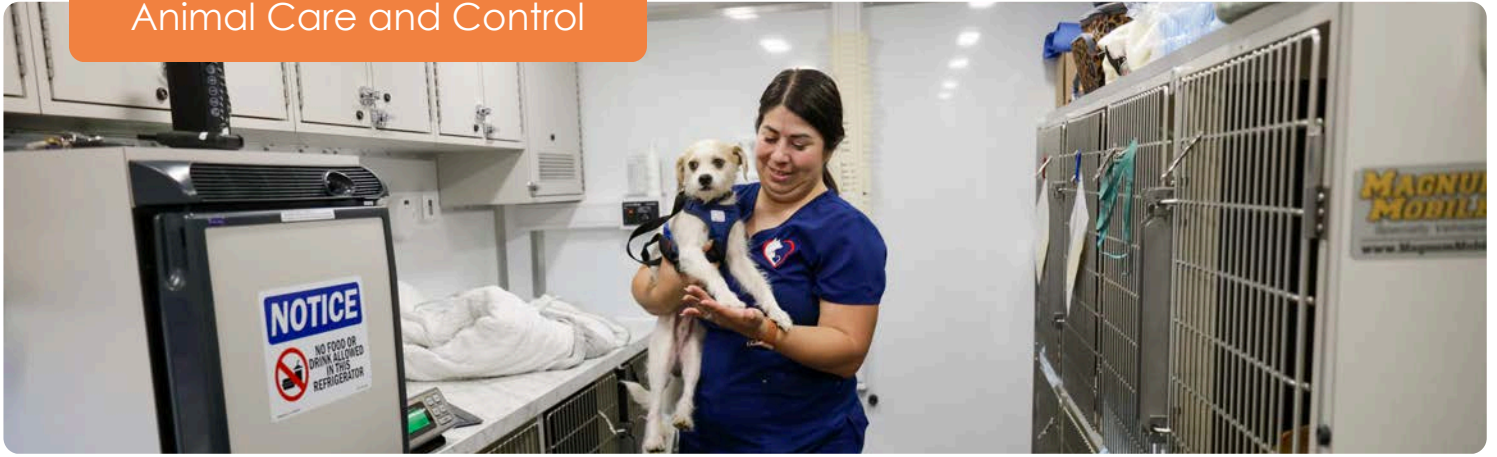
Fire Protection



Fire Dept. Comparison

Category	2025	2024	Difference	% Change
Fire	53	50	3	6%
Rescue/EMS	2638	2642	-4	-0.3%
Hazardous Condition	15	24	-9	-37.5%
Service Call	67	6	61	1016.7%
False Alarm	835	840	-5	-0.6%
Severe Weather/Natural Disaster	73	58	15	25.9%
Special Incident/Other	1	1	0	0.00%
Total	3693	3691	2	0.05%

Animal Care and Control



Animal Care and Control Comparison

Category	2025	2024	Difference	% Change
Total Service Calls	1420	1488	-68	-4.6%
Service Calls – Day	1062	1025	37	3.6%
Service Calls – Night	358	463	-105	-22.7%
Service Time – In Hours	850	860	-10	-1.2%
Stray Dogs	108	87	21	24.1%
Stray Cats	51	13	38	292.3%
Misc. Animals Received	223	205	28	13.7%
Dogs Adopted	38	46	-8	-17.4%
Cats Adopted	30	23	7	30.4%
Live Release Rate – Dogs	76%	72%		4%
Live Release Rate – Cats	62%	61%		1%
Bites	26	17	9	52.9%
Cruelty	19	39	-20	-51.3%
Violations	80	101	-21	-20.8%